



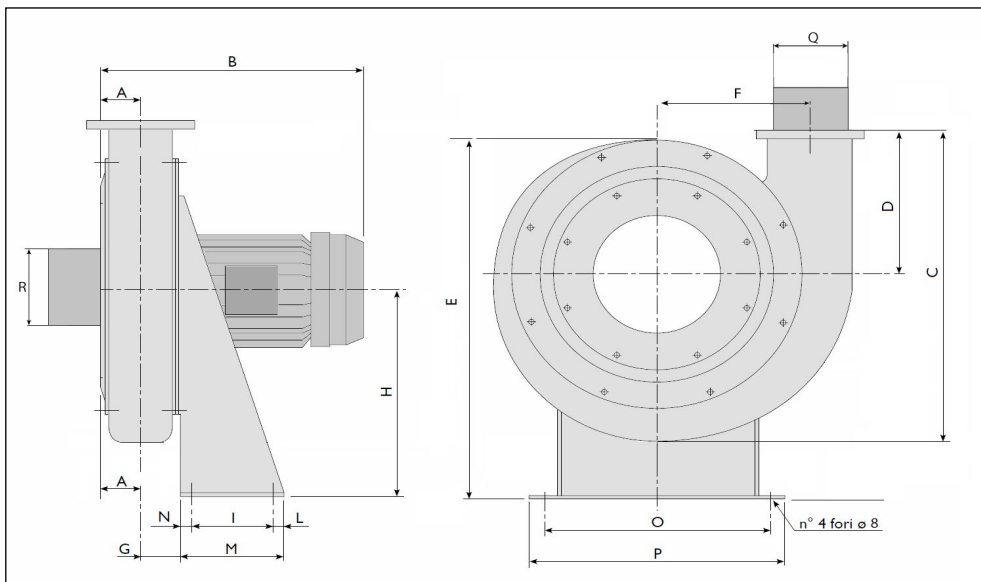
 Elettroaspiratore in fusione di alluminio completo di flange di entrata e uscita. Ventilatore orientabile, adatto per portate basse e pressioni medio/alte.

 Cast aluminum fan with inlet and outlet flanges. Fan adjustable, suitable for low flow rates and pressures medium / high.

 Electro-aspirateur en fusion d'aluminium avec brides à entrée et de sortie. Fan réglable, adapté aux débits et pressions moyennes / haute faible débit.

 Ventilator aus Aluminium einschl. Saug- und Druckstutzen. Fan einstellbar, geeignet für niedrige Durchflussraten und Drücke mittel / hoch.

 Aspirador en fundición de aluminio con bocas de entrada y salida. Ventilador ajustable, apto para caudales bajos y presiones medias / altas.



| Model | A (mm) | B (mm) | C (mm) | D (mm) | E (mm) | F (mm) | G (mm) | H (mm) | I (mm) | L (mm) | M (mm) | N (mm) | O (mm) | P (mm) | Q (mm) outlet | R (mm) inlet | Kg | HP | kW | R.P.M |
|----------|--------|--------|--------|--------|--------|--------|--------|--------|--------|--------|--------|--------|--------|--------|---------------|--------------|------|------|------|-------|
| AS-25/D | 50 | 286 | 346 | 154 | 404 | 164 | 48 | 233 | 95 | 12,5 | 120 | 12,5 | 265 | 295 | 75 L* | 120 L* | 12,3 | 0,25 | 0,18 | 2800 |
| AS-50/C | 50 | 288 | 385 | 176 | 441 | 180 | 46 | 253 | 95 | 12,5 | 120 | 12,5 | 265 | 295 | 120 L* | 150 R* | 17,0 | 0,50 | 0,37 | 2800 |
| AS-50/D | 50 | 288 | 385 | 176 | 441 | 180 | 46 | 253 | 95 | 12,5 | 120 | 12,5 | 265 | 295 | 120 L* | 160 L* | 17,0 | 0,50 | 0,37 | 2800 |
| AS-75/C | 50 | 314 | 385 | 176 | 441 | 180 | 46 | 253 | 95 | 12,5 | 120 | 12,5 | 265 | 295 | 120 L* | 150 R* | 18,0 | 0,75 | 0,55 | 2800 |
| AS-75/D | 50 | 314 | 385 | 176 | 441 | 180 | 46 | 253 | 95 | 12,5 | 120 | 12,5 | 265 | 295 | 120 L* | 160 L* | 18,0 | 0,75 | 0,55 | 2800 |
| AS-100/C | 63 | 348 | 431 | 197 | 494 | 201 | 54 | 283 | 95 | 12,5 | 120 | 12,5 | 265 | 295 | 120 L* | 200 R* | 21,0 | 1 | 0,75 | 2800 |
| AS-100/D | 63 | 348 | 431 | 197 | 494 | 201 | 54 | 283 | 95 | 12,5 | 120 | 12,5 | 265 | 295 | 120 L* | 200 L* | 21,0 | 1 | 0,75 | 2800 |
| AS-150/C | 58 | 339 | 521 | 250 | 577 | 231 | 49 | 321 | 140 | 30 | 200 | 30 | 310 | 340 | 120 L* | 200 R* | 26,9 | 1,5 | 1,1 | 2800 |
| AS-150/D | 58 | 339 | 521 | 250 | 577 | 231 | 49 | 321 | 140 | 30 | 200 | 30 | 310 | 340 | 120 L* | 200 L* | 26,9 | 1,5 | 1,1 | 2800 |
| AS-200/C | 58 | 377 | 521 | 250 | 577 | 231 | 49 | 321 | 140 | 30 | 200 | 30 | 310 | 340 | 120 L* | 200 R* | 34,4 | 2 | 1,5 | 2800 |
| AS-200/D | 58 | 377 | 521 | 250 | 577 | 231 | 49 | 321 | 140 | 30 | 200 | 30 | 310 | 340 | 120 L* | 200 L* | 34,4 | 2 | 1,5 | 2800 |

* L= liscio/smooth/ lisse / glatt / liso

*R= risvoltato/folded/plié/gefaltet/plegada

| | AS25 | AS50 | AS75 | AS100 | AS150 | AS200 |
|----------|--------------------------------------|------|------|-------|-------|-------|
| Q [m³/h] | P _T [mm H ₂ O] | | | | | |
| 100 | | | | | | |
| 150 | 115 | | | | | |
| 200 | 114 | | | | | |
| 250 | 113 | 150 | | | | |
| 300 | 110 | 146 | | | | |
| 350 | 109 | 145 | 170 | | | |
| 400 | 108 | 142 | 164 | | | |
| 450 | 99 | 139 | 162 | 194 | | |
| 500 | 94 | 137 | 160 | 194 | 242 | |
| 600 | 83 | 136 | 152 | 193 | 239 | 305 |
| 700 | 58 | 112 | 142 | 186 | 229 | 302 |
| 800 | | 90 | 130 | 180 | 224 | 295 |
| 900 | | | 112 | 174 | 220 | 288 |
| 1000 | | | | 165 | 210 | 280 |
| 1100 | | | | 155 | 203 | 275 |
| 1200 | | | | | 192 | 270 |
| 1300 | | | | | | 260 |
| 1400 | | | | | | 254 |
| 1600 | | | | | | 230 |

