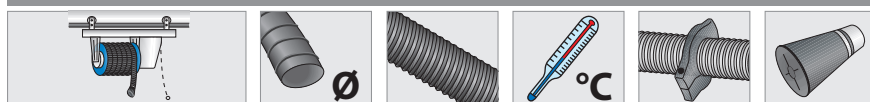


## ARCET-SB

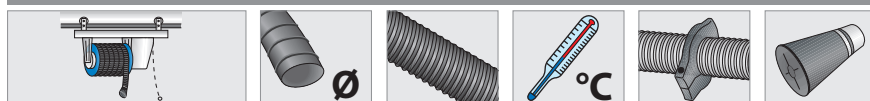


ARCET-75/7-SB					
ARCET-75	75 mm 3"	7,5 mt. 24,6 ft	200° C 392° F	AFT-75	-
ARCET-75/10-SB					
ARCET-75	75 mm 3"	10 mt. 32,8 ft	200° C 392° F	AFT-75	-
ARCET-75/13-SB					
ARCET-75	75 mm 3"	5 mt. 43 ft	200° C 392° F	AFT-75	-
ARCET-100/7-SB					
ARCET-100	100 mm 4"	7,5 mt. 24,6 ft	200° C 392° F	AFT-100	-
ARCET-100/10-SB					
ARCET-100	100 mm 4"	10 mt. 32,8 ft	200° C 392° F	AFT-100	-
ARCET-100/13-SB					
ACET-100	100 mm 4"	13 mt. 43 ft	200° C 392° F	AFT-100	-
ARCET-125/7-SB					
ACET-125	125 mm 5"	7,5 mt. 24,6 ft	200° C 392° F	AFT-125	-
ARCET-125/10-SB					
ACET-125	125 mm 5"	10 mt. 32,8 ft	200° C 392° F	AFT-125	-
ARCET-125/13-SB					
ACET-125	125 mm 5"	13 mt. 43 ft	200° C 392° F	AFT-125	-
ARCET-150/10-SB					
ACET-150	150 mm 6"	10 mt. 32,8 ft	200° C 392° F	AFT-150	-

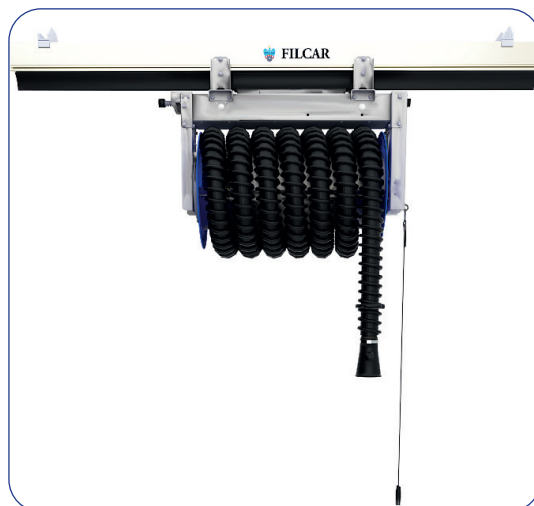


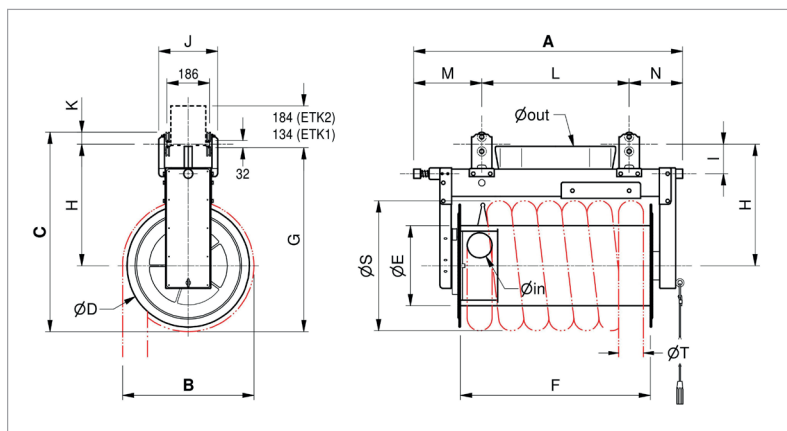
Per differenti configurazioni, si prega di riferirsi al listino prezzi; - For different configurations, please refer to the price list; - Pour diferentes configuraciones, regarder sur le tarif; - Für andere Lösungen, bitte sich an die Preisliste beziehen; - Para diferentes configuraciones, mirar la tarifa.

## ARCET-COMP



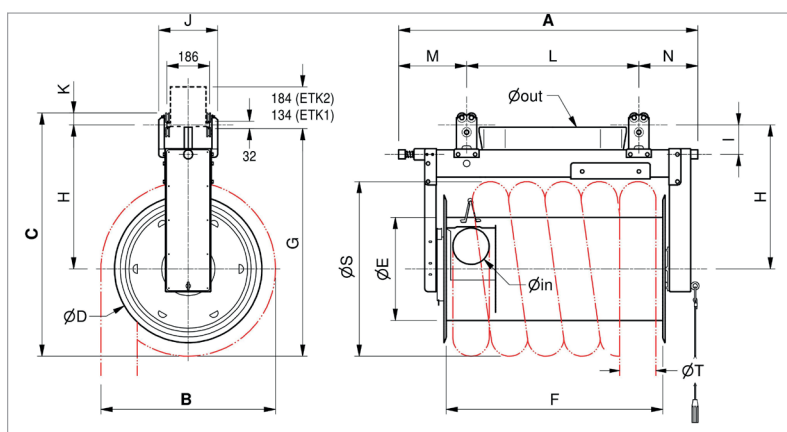
ARCET-75/7-COMP					
ARCET-75	75 mm - 3"	7,5 mt. 24,6 ft	200° C 392° C	AFT-75	BGT-75/140
ARCET-75/10-COMP					
ARCET-75	75 mm - 3"	10 mt. 32,8 ft	200° C 392° C	AFT-75	BGT-75/140
ARCET-75/13-COMP					
ARCET-75	75 mm 3"	5 mt. 43 ft	200° C 392° C	AFT-75	BGT-75/140
ARCET-100/7-COMP					
ARCET-100	100 mm 4"	7,5 mt. 24,6 ft	200° C 392° C	AFT-100	BGT-100/140
ARCET-100/10-COMP					
ARCET-100	100 mm 4"	10 mt. 32,8 ft	200° C 392° C	AFT-100	BGT-100/140
ACET-100/13-COMP					
ACET-100	100 mm 4"	13 mt. 43 ft	200° C 392° C	AFT-100	BGT-100/140
ACET-125/7-COMP					
ACET-125	125 mm 5"	7,5 mt. 24,6 ft	200° C 392° F	AFT-125	BG-125/200
ACET-125/10-COMP					
ACET-125	125 mm 5"	10 mt. 32,8 ft	200° C 392° F	AFT-125	BG-125/200
ACET-125/13-COMP					
ACET-125	125 mm 5"	13 mt. 43 ft	200° C 392° F	AFT-125	BG-125/200
ACET-150/10-COMP					
ACET-150	150 mm 6"	10 mt. 32,8 ft	200° C 392° F	AFT-150	BG-150/200





ARCET	A (mm)	B (mm)	C (mm)	ØD (mm)	ØE (mm)	F (mm)	G (mm)	H (mm)	I (mm)	J (mm)	K (mm)	L (mm)	M (mm)	N (mm)	ØS (mm)	ØT (mm)	Øin (mm)	Øout* (mm)	Peso (kg)
75/7	1190	540	857	540	350	850	789	535	130	260	52	650	300	240	526	88	75	124	48
75/10	1190	540	857	540	350	850	789	535	130	260	52	650	300	240	526	88	75	124	50
75/13	1190	540	857	540	350	850	789	535	130	260	52	650	300	240	526	88	75	124	52
100/7	1190	582	878	540	350	850	810	535	130	260	52	650	300	240	582	116	100	124	49
100/10	1190	582	878	540	350	850	810	535	130	260	52	650	300	240	582	116	100	124	52

(\*) Diametro equivalente relativo alla sezione di passaggio dell'ogiva d'aspirazione - (\*) Equivalent diameter relative to the passage section of the suction nose piece - (\*) Diamètre équivalent par rapport à la section de passage du nez d'aspiration - (\*) Äquivalenter Durchmesser in Bezug auf den Durchgangsbereich des Ansaugstutzens - (\*) Diámetro equivalente con respecto a la sección de paso de la boquilla de aspiración.



ACET	A (mm)	B (mm)	C (mm)	ØD (mm)	ØE (mm)	F (mm)	G (mm)	H (mm)	I (mm)	J (mm)	K (mm)	L (mm)	M (mm)	N (mm)	ØS (mm)	ØT (mm)	Øin (mm)	Øout* (mm)	Peso (kg)
100/13	1320	682	1028	650	450	960	960	635	130	260	52	760	300	260	682	116	100	124	75
125/7	1080	732	1053	650	450	720	985	635	130	260	52	640	240	200	732	141	125	124	67
125/10	1080	732	1053	650	450	720	985	635	130	260	52	640	240	200	732	141	125	124	70
125/13	1320	732	1053	650	450	960	985	635	130	260	52	760	300	260	732	141	125	124	80
150/10	1320	782	1073	650	450	960	1005	635	130	260	52	760	300	260	782	166	150	124	78

(\*) Diametro equivalente relativo alla sezione di passaggio dell'ogiva d'aspirazione - (\*) Equivalent diameter relative to the passage section of the suction nose piece - (\*) Diamètre équivalent par rapport à la section de passage du nez d'aspiration - (\*) Äquivalenter Durchmesser in Bezug auf den Durchgangsbereich des Ansaugstutzens - (\*) Diámetro equivalente con respecto a la sección de paso de la boquilla de aspiración.